

CLARE THACKWAY

BETWEEN US

17 MAR - 3 APR 2021

EXHIBITION CATALOGUE



CLARE THACKWAY

BETWEEN US

17 MAR - 3 APR 2021

Clare Thackway shows us how figurative painting can unveil the relationship of intimacy to distance. The space between bodies is an ongoing consideration explored through the use of drapery and the stripe, with these ideas now palpable in the context of a global pandemic. The cloth creates separation and a physical barrier but this can also be felt as an act of collective care. There is a tenderness in the works as they unfold aspects of the body in vulnerable states. These are intimate paintings that contemplate our anxieties around contagion and a health response that seeks to separate and demarcate. The sensation is made visceral in the paint method through aerosols projecting across the surface. It appears as glitches, spots and sprays – masking fluid on the base layer generating areas of vivid pink and yellow that abstract the visual field. The breath, an essential expression of life, now requires containment and management.

The artist relocated to Paris from the Illawarra, and the colour has shifted to evoke this quite extreme distance. The paintings are interiors but eucalyptus green and gold hues cast a landscape quality over the work and there is a dryness to the palette that suggests Australian conditions. The softer lilac tones comprehend the more subtle light found in the sky at dusk. The muted approach to this light then brings us into the northern hemisphere.

The fabric stripe is a fundamental pattern used by Thackway for both contemplation and compositional strategy. The thick bands fragment and distort the figure by introducing a false contour that twists to create illusion. The shifts in surface play a trick with perspective – are the bodies standing or in repose? Are we looking down or across? Is there a body there at all? Culturally the stripe also has fascinating evocations – for hazard or hygiene, freedom and confinement. The artist works with these fluid associations as a personal trope that allows her to explore psychological states and social dynamics.

Clare Thackway works with subjects she knows well and although these are not portraits there is an intense feeling of intimacy in the work. This is countered by the drape of fabric and painterly surface interruptions that acknowledge the spaces between us. Previously the cloth was employed by the artist to explore connection, but in this current time we may feel the masking of the body as a deliberate separation. The newly pictured intermediary space, no longer a void, contains splatters of paint – aerosols with anxious potential. The spots that float in the foreground suggest an invisible interrupting force. In this context the works make contact with the interdependence of our bodies, intricately linked while separated by borders and systems of control.

-Melody Willis







Amid, 2020
Oil on canvas
65 x 54 cm
\$ 2,700





Between Us, 2020
Oil on canvas
65 x 54 cm
\$ 2,700





Breath, 2020
Oil on canvas
65 x 54 cm
\$ 2,700





Longing Forward, 2020
Oil on canvas
65 x 54 cm
\$ 2,700





Migration, 2020
Oil on canvas
65 x 54 cm
\$ 2,700





Moonlight, 2020
Oil on canvas
81 x 65 cm
\$ 3,600



Shield, 2020
Oil on canvas
65 x 54 cm
\$ 2,700





In the Midst, 2020
Oil on canvas
65 x 54 cm
\$ 2,700





Inhale, Exhale, 2020
Oil on canvas
81 x 65 cm
\$ 3,600



Reading Graphs, 2020
Oil on canvas
35 x 27 cm
Framed: 40 x 32 x 4 cm
\$ 1,750





Two Figures Dancing II, 2020
Oil on canvas
35 x 27 cm
Framed: 40 x 32 x 4 cm
\$ 1,750





Flying, 2021
Oil on board
35 x 27 cm
Framed: 37 x 29 x 4.5 cm
\$ 1,750





Strip, 2021
Oil on board
35 x 27 cm
Framed: 37 x 29 x 4.5 cm
\$ 1,750



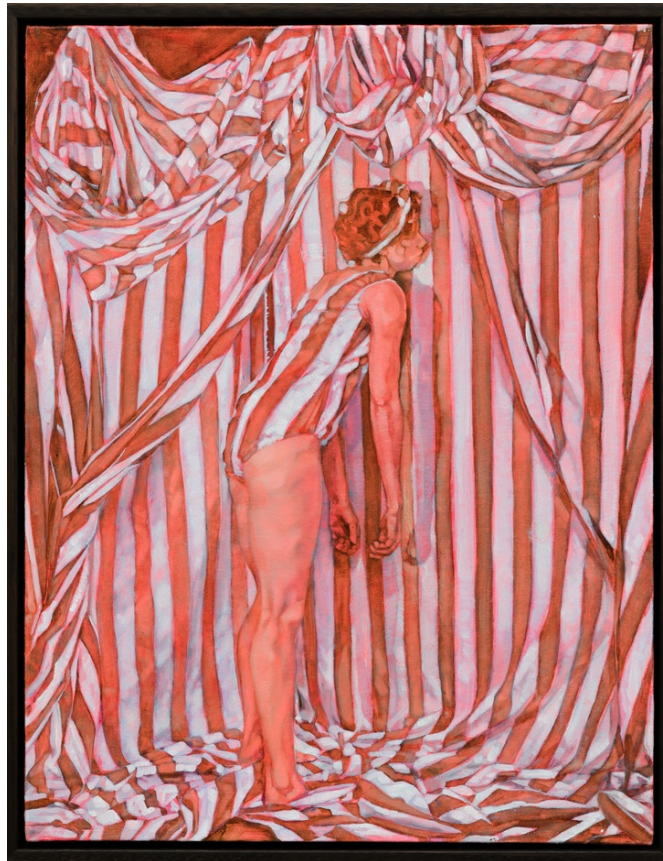
Lay It Down, 2021
Oil on board
35 x 27 cm
Framed: 37 x 29 x 4.5 cm
\$ 1,750



Protect, 2021
Oil on board
35 x 27 cm
Framed: 37 x 29 x 4.5 cm
\$ 1,750



Espace Entre Nous, 2021
Oil on board
35 x 27 cm
Framed: 37 x 29 x 4.5 cm
\$ 1,750



Lean, 2021
Oil on board
35 x 27 cm
Framed: 37 x 29 x 4.5 cm
\$ 1,750



CLARE THACKWAY

CV

Born 1984 Canberra, ACT, Australia
Based in Paris, France

EDUCATION

2012 Graduate Certificate of Digital Arts, ANU, Canberra, ACT
2006 Honours in Fine Art Painting, National Art School, Sydney, NSW
2004 University Exchange, Glasgow School of Art, Glasgow, Scotland
Bachelor of Arts - Visual (Painting), ANU, Canberra, ACT

SOLO EXHIBITIONS

2021 Between Us, The Egg & Dart, Thirroul, NSW
Between Us, Le Pavé d'Orsay, Paris, France
2020 La Fabrique, Ivry-Sur-Seine, France
2017 Ties, The Egg & Dart, Thirroul, NSW
2016 All of that Implicit Memory, Wellington Street Projects, Sydney, NSW
Over and Over, Canberra Contemporary Art Space City, Canberra, ACT
2015 An Infinite Everything, with Gregory Hodge, The Egg & Dart, Thirroul, NSW
2013 Introduction, with Gregory Hodge, Firstdraft ARI, Sydney, NSW
2012 Green Valley Farm, Canberra Contemporary Art Space Gorman House, Canberra, ACT
2011 Introduction, with Gregory Hodge, Basso, Berlin, Germany
2009 Broken Hearted Attack, Blindside, Melbourne, VIC
2007 Contain, Mori Gallery, Sydney, NSW
Navel Gazing, Canberra Contemporary Art Space, Canberra, ACT

GROUP EXHIBITIONS

2021 Unthinkable Fields (upcoming), ANCA, Canberra, ACT
L'Autre, Le Pavé D'Orsay, Paris, France
2020 Salon des Refusés, S.H. Ervin Gallery, Sydney, NSW
Every Body from the Collection, Wollongong Art Gallery, Wollongong, NSW
Holding Pattern, The Egg and Dart, Thirroul, NSW
2019 12@61, Flinders Street Gallery, Sydney, NSW
2018 Charmed Contemporary Works from the Collection Wollongong Art Gallery Wollongong, NSW
The Way We See our Selves, Westend Artspace, Melbourne, VIC
Human Geographies, The Egg and Dart, Thirroul, NSW
2016 A to B and back again, Tuggeranong Arts Centre, Canberra, ACT
Born, The Gallery BFS, Corrimal, NSW
Gallery Collection Home @735, The Gallery BFS, Corrimal, NSW
2015 Past Perfect, Leta Gallery + Project Space, Canberra, ACT
2014 Mind the Gap, Casula Power House, Sydney, NSW
2013 Future Proof, Canberra Contemporary Art Space Gorman House, Canberra, ACT
Breathing Room, Mop Projects, Sydney, NSW
Portrait and Identity, ANU School of Art, Canberra, ACT
The view from here, You Are Here Festival, Canberra, ACT
Altogether Now, Sawtooth Artist Run Gallery, Launceston, ACT
48 Stunden Neukölln, Tischendorf, Berlin, Germany
2011 It Began Some Where Else, Flinders Street Gallery, Sydney, NSW
2008 Line Up, Mary Place Gallery, Sydney, NSW
2007 If You See Something Say Something, Mori Gallery, Sydney, NSW



CLARE THACKWAY

CV

GRANTS, AWARDS, PUBLICATIONS & INTERVIEWS

- 2019 Finalist, Archibald Prize, Art Gallery of NSW, Sydney, NSW
Finalist, Portia Geach Memorial Award, S.H. Ervin Gallery, Sydney, NSW
- 2018 Finalist, Doug Moran National Portrait Prize, Juniper Hall, Sydney, NSW
Finalist, Portia Geach Memorial Award, S.H. Ervin Gallery, Sydney,
Finalist, Sir John Sulman Prize, Art Gallery of NSW, Sydney, NSW
Finalist, Hufford Hardwood Portrait Prize, Lismore Regional Gallery, Lismore, NSW
- 2017 Highly Commended, Portia Geach Memorial Award, S.H. Ervin Gallery, Sydney
Finalist, Fisher Ghost Art Award, Campbelltown Arts Centre, Sydney, NSW
- 2015 Finalist, Hufford Hardwood Portrait Prize, Lismore Regional Gallery, Lismore, NSW
- 2013 Finalist, Doug Moran Portrait Prize, Juniper Hall, Sydney, NSW
Finalist, Blake Prize for Religious Art, Galleries Collage of Fine Art UNSW, Sydney
Finalist, Portia Geach Memorial Award, S.H. Ervin Gallery, Sydney, NSW
- 2012 Finalist, ID Digital Portrait Award, National Portrait Gallery, Canberra, NSW
- 2009 Winner, Marten Bequest Travelling Art Scholarship, Australia
Finalist, Portia Geach Memorial Award, S.H. Ervin Gallery, Sydney, NSW
Finalist, Emerging, Gosford Regional Gallery, Gosford, NSW
- 2008 Finalist, Metro 5 Art Award, Metro Gallery, Melbourne, VIC
Finalist, Stanthorpe Regional Art Prize, Stanthorpe Regional Gallery, QLD
- 2007 Finalist, Helen Lempriere Travelling Scholarship, Artspace, Sydney, NSW
Finalist, Portia Geach Memorial Award, S.H. Ervin Gallery, Sydney, NSW

RESIDENCIES AND MENTORSHIPS

- 2016 Artist Residency, The Cranleigh School, Canberra, ACT
- 2014 Artist Residency, Good Shephard Lutheran College, Darwin, NT
- 2012 Splendid Mentorship, Freemantle Arts Centre and iVEC University of Western Australia, Perth, WA
- 2011 Splendid Arts Lab, Lismore Regional Gallery, Lismore, NSW
- 2010 Artist Residency, New England Regional Art Museum, Armidale, NSW
- 2008 Artist Residency, Wik Media Aurukun through Mori Gallery, Australia

