

Egg &
DART

MIGNON STEELE
NEARER BY FAR

16 SEPTEMBER - 3 OCTOBER 2020

MIGNON STEELE

NEARER BY FAR

Mignon Steele paints to understand painting. This paradox compels her to search for an unfamiliar arrangement of colour and mark, a shifting expanse. She feels these current works are a reflection of who we might be in the world right now, further apart yet tethered to home. Her “night drawings”, contained and delicate meanderings under lamplight, reveal this domestic tethering. The larger works in *Nearer By Far* are informed by these drawings. In the studio, Mignon further describes how her recent paintings “unfold like vines and stand up by themselves”. She plays painterly tricks to find something new, “edging up to it ... catching a glimpse, losing it in the bushes”. She enacts surface disturbances to ensnare “ubiquitous pre-verbal shapes and voids that skulk from recognition”.

At the beginning of a new sequence there are always a few works kicking around with early potential before an emergent sensibility presents itself. An obliteration phase occurs then where previous work is cancelled through active methods of applying paint and rebuilding the surface. A partial clean ground might emerge, aiming for a state of potential with something promising coming through.

There is an essential searching quality in Mignon’s practice. This depth of experience is like walking along a well-known bush track but discovering new elements each time, ambient sounds, shifts in weather and moisture levels, always pushing away from the habitual. In a conversation about art, our resolutions stutter. Mignon wonders, “We’re not in nature asking it to explain itself”. There’s an unknowable element here, and discourse and writing can’t meet it.

Based in the Illawarra, Mignon Steele’s recent exhibitions include shows in Melbourne and Sydney. She shifts effortlessly from her well-established painting practice to work as a colourist and mural painter with design duo Barnacle Studios.

- Melody Willis

MIGNON STEELE
NEARER BY FAR



Fledgling Sorrows
2020, acrylic and wax on fibro
62 x 62 cm

\$1,600 Framed

SOLD

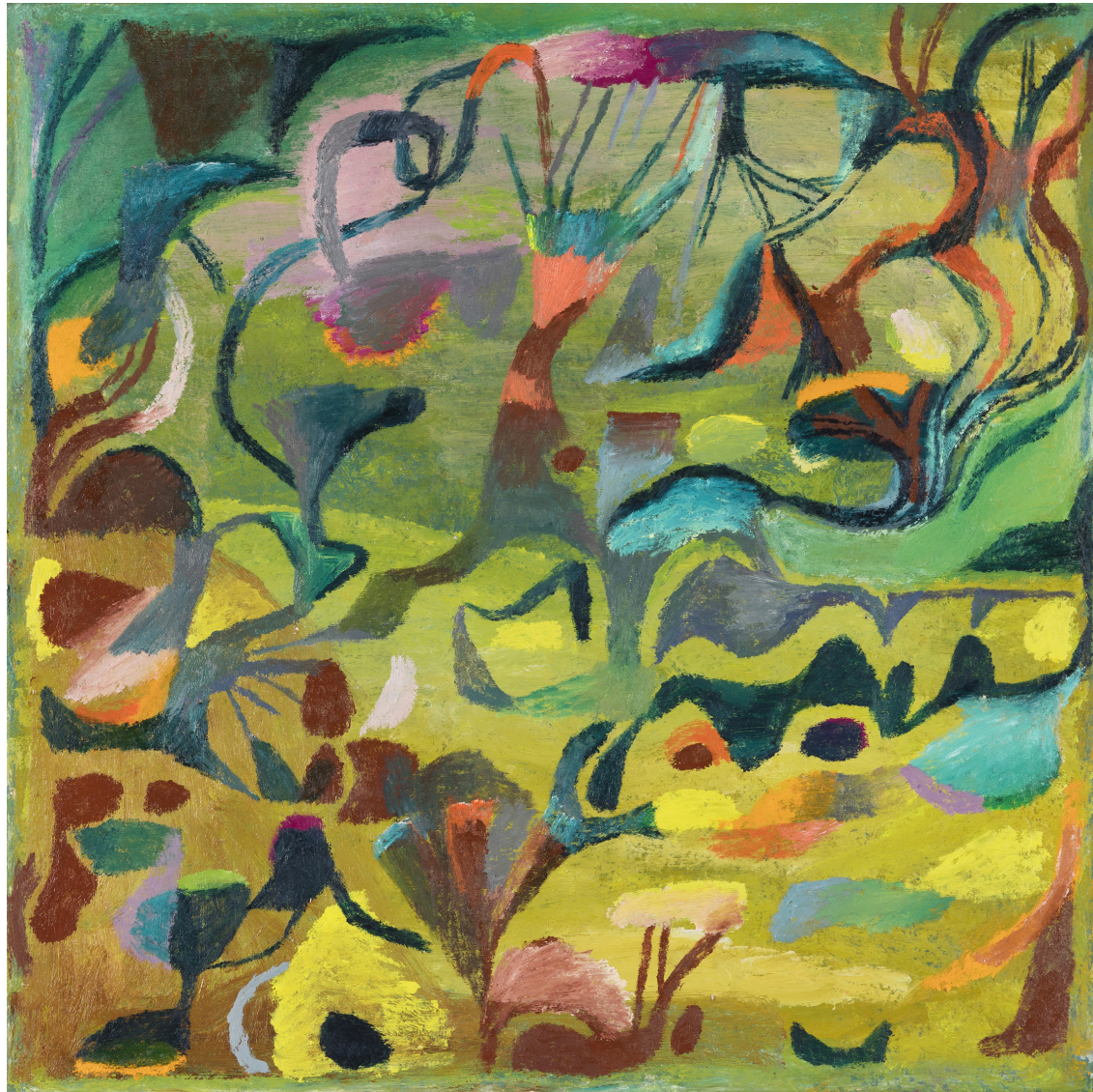
Egg
&
DART

MIGNON STEELE
NEARER BY FAR



Glint
2020, oil on canvas
51 x 51 cm
\$1,200

MIGNON STEELE
NEARER BY FAR



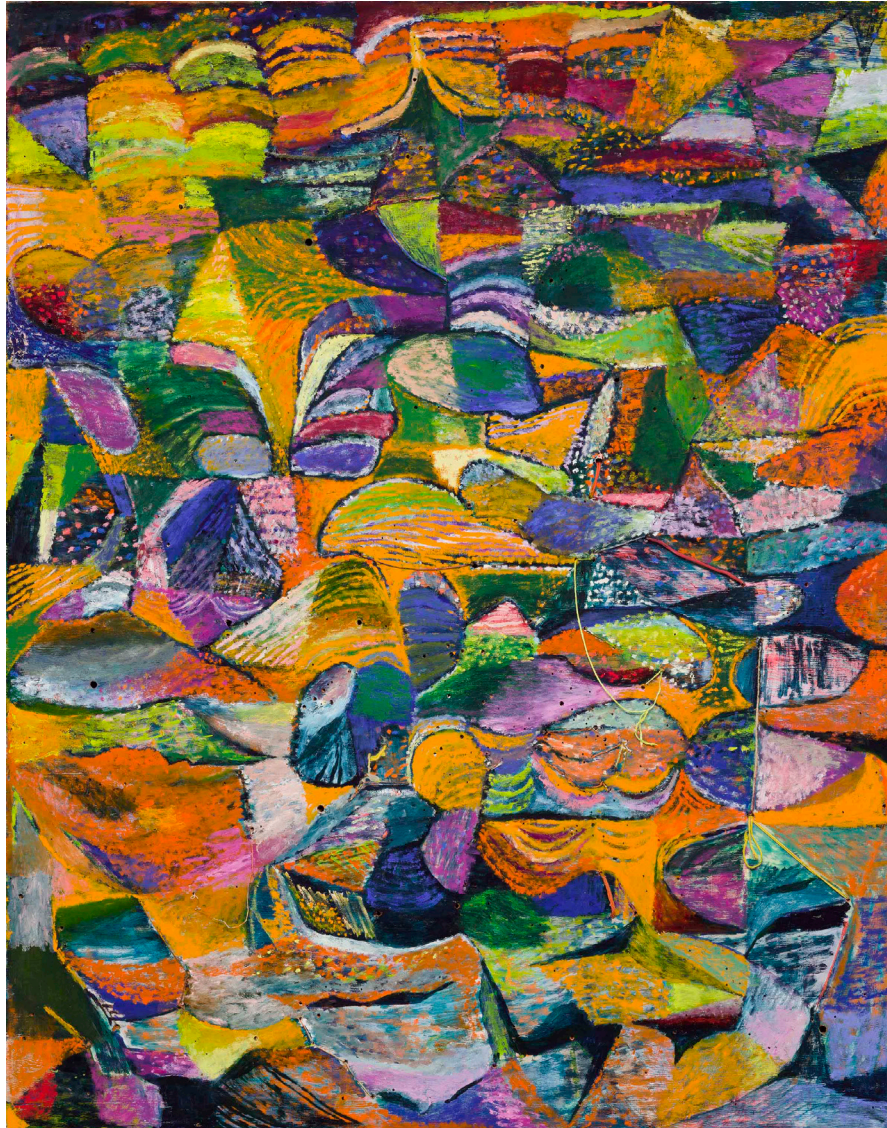
Mogrify
2020, oil on canvas
51 x 51 cm

\$1,200

SOLD

Egg &
DART

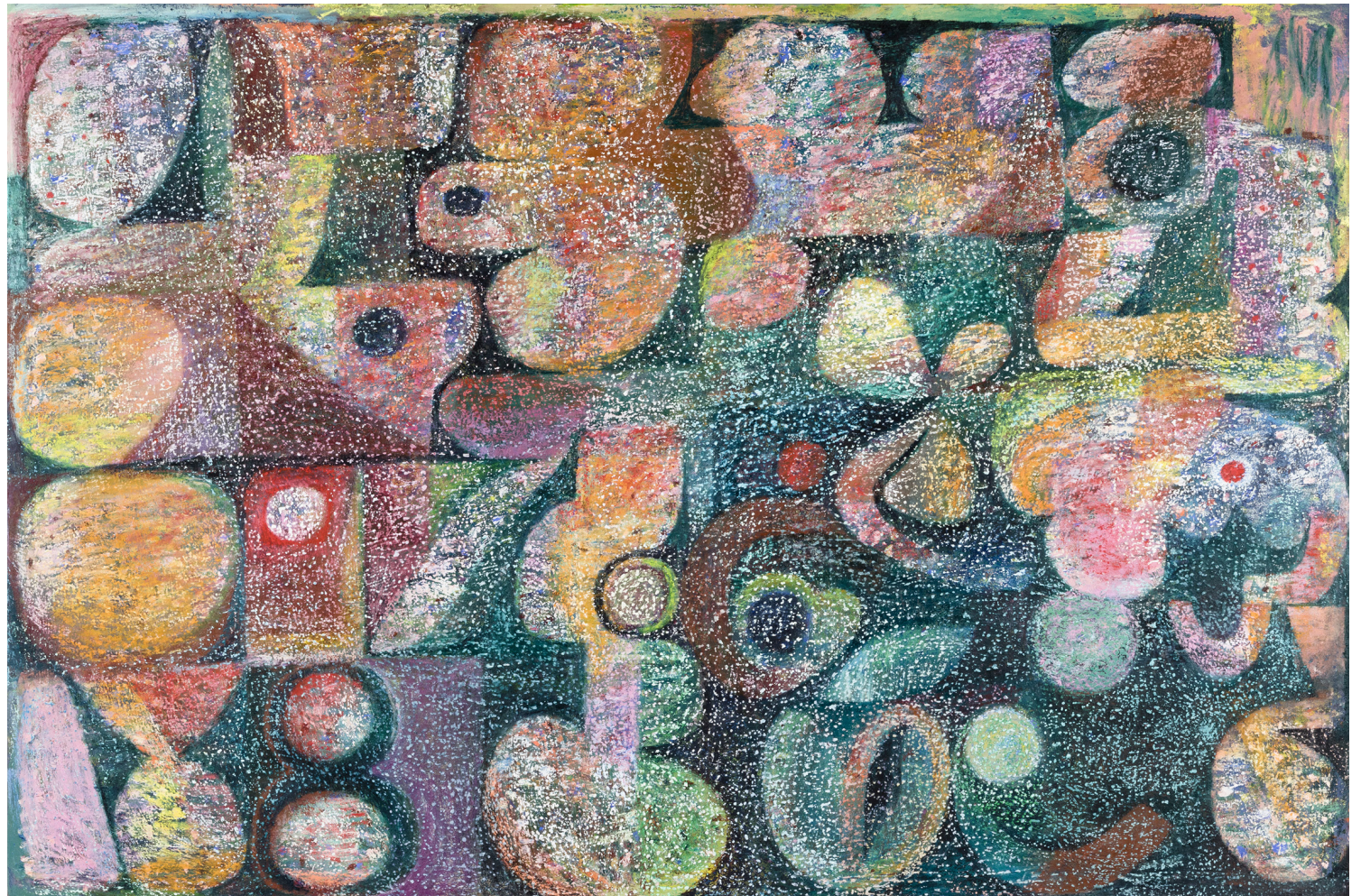
MIGNON STEELE
NEARER BY FAR



Terra Fray
2020, oil, string, wire on board
122 x 97 cm

\$3,600 Framed

MIGNON STEELE
NEARER BY FAR



Nearer by Far
2019, oil on canvas
121 x 183 cm
\$4,400
SOLD

Egg &
DART

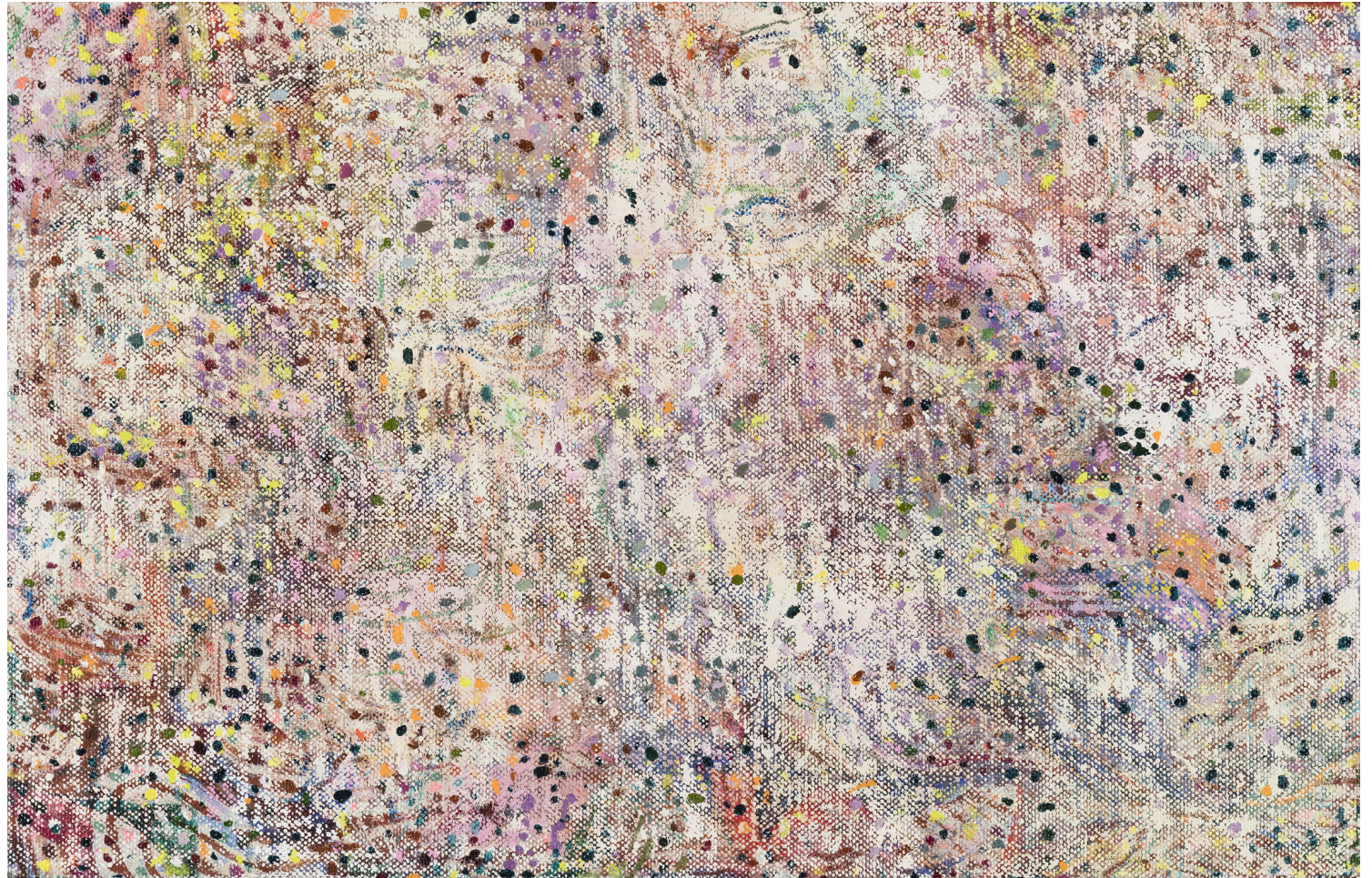
MIGNON STEELE
NEARER BY FAR



Quarrel Smoke
2020, oil on canvas
76 x 76 cm

\$2,300 Framed

MIGNON STEELE
NEARER BY FAR



Unknown Bird
2020, oil on linen
60 x 93 cm

\$2,100

SOLD

Egg
&
DART

MIGNON STEELE
NEARER BY FAR



MIGNON STEELE
NEARER BY FAR



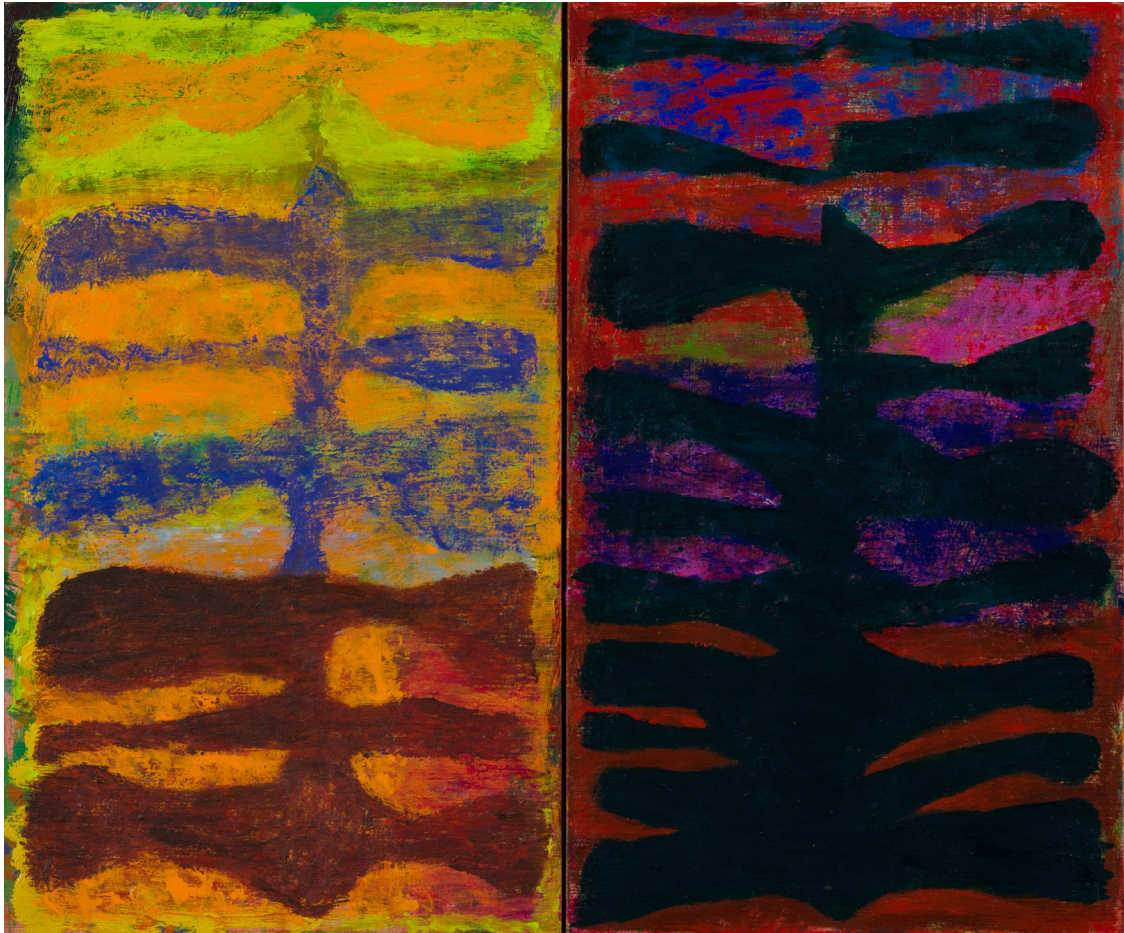
Sitella
2020, oil on board
40 x 40 cm

\$1,100 Framed

SOLD

Egg
&
DART

MIGNON STEELE
NEARER BY FAR



Transverse Verse
2020, oil on board, diptych
36 x 43 cm

\$900 Framed

SOLD

Egg &
DART

MIGNON STEELE

CV

Born 1978 Bulli, NSW Australia

Based in Bellambi, NSW Australia

EDUCATION

1999 Bachelor of Fine Arts (Visual Arts), NATIONAL ART SCHOOL, Sydney, NSW

SOLO EXHIBITIONS

- 2019 *Volition*, THE EGG AND DART, Thirroul, NSW
- 2016 *Antidote - Barnacle Studio*, SHEFFER GALLERY, Sydney, NSW
- 2015 *Falling (Still) Rocks*, MAYFAIR GALLERY, Darwin, NT
- Transmitter*, THE EGG AND DART, Thirroul, NSW
- 2011 *Agglomeration*, NUMBER 10 ART PRECINCT, Jamberoo, NSW

SELECTED GROUP EXHIBITIONS

- 2019 *Holding Pattern/ Treading Water*, THE EGG AND DART, Thirroul, NSW
- 2019 *Otherworldly*, THE EGG AND DART, Thirroul, NSW
- 2019 *The Correspondence of Noticing*, COUNIHAN GALLERY, Brunswick, VIC
- 2018 *Mixed Bag*, THE EGG & DART, Thirroul, NSW
- 2017 *Managing Expectations*, THE EGG & DART, Thirroul, NSW
- Solace*, SHEFFER GALLERY, Sydney, NSW
- 2016 *Twelve*, KOSKELA, Sydney, NSW
- 2015 *A Second Shadow*, THE LOCKUP CULTURAL CENTRE, Newcastle, NSW
- 2014 - 2019 *The Annual Egg & Dart Christmas Show*, THE EGG & DART, Thirroul, NSW
- 2012 *Everything Touches Everything; Five Painters*, RADOVAN MICA TRNAVAC, Valjevo, Serbia
- 2011 *Google Me This*, LIBRARY ART SPACE, Melbourne, VIC
- 2009 *30th Anniversary Exhibition*, WOLLONGONG ART GALLERY, Wollongong, NSW

AWARDS

- 2017 Bayside Acquisitive Prize (Finalist), BAYSIDE ART CENTRE, Brighton, VIC
- 2016 Wollongong Contemporary Watercolour Prize, (Finalist), WOLLONGONG ART GALLERY, Wollongong, NSW
- 2013 Now! Contemporary Art Prize (Highly Commended), SHOALHAVEN ART CENTRE, Shoalhaven, NSW
- 2012 James Kiwi Watercolour Exhibition (Finalist), WOLLONGONG ART GALLERY, Wollongong, NSW
- 2011 Gosford Art Prize (Finalist), GOSFORD REGIONAL GALLERY, East Gosford, NSW
- 2011 Fisher's Ghost Art Award (Finalist), CAMPBELLTOWN ARTS CENTRE, Campbelltown, NSW

RESIDENCIES

- 2019 Umbi Gumbi Artist Residency, Cuttagee NSW
- 2017 Soft Landing - Resource Recovery, Bellambi, NSW
- 2016 The LockUp Art Space, Newcastle, NSW

MIGNON STEELE
NEARER BY FAR

